

## 2026 K5 GT-LINE FWD

MODEL/OPT.CODE: LAC4254 / 17  
 EXTERIOR COLOR: WOLF GRAY  
 INTERIOR COLOR: BLACK  
 VEHICLE ID NUMBER: KNAG64J78T5488540  
 PORT OF ENTRY: HUENEME

Sold To: CA234  
 Hilltop Kia  
 3280 AUTO PLAZA  
 RICHMOND CA 94806

Ship To: CA234



### STANDARD FEATURES

#### STANDARD LXS FWD FEATURES

**MECHANICAL**  
 2.5L Gas Direct Injection (GDI) 4-Cyl Engine  
 8-Speed Automatic Transmission  
 Electronic Parking Brake w/ Auto Hold  
 Drive Mode Select

#### ADVANCED DRIVER-ASSISTANCE SYSTEMS

Forward Collision-Avoidance Assist - Cyclist/Jct Turning  
 Lane Keeping Assist & Lane Following Assist  
 Driver Attention Warning & High Beam Assist  
 Blind-Spot Collision-Avoidance Assist  
 Rear Cross-Traffic Collision-Avoidance Assist  
 Parking Distance Warning - Forward / Reverse  
 Safe Exit Assist  
 Smart Cruise Control w/Stop & Go

#### SAFETY

Dual Front Advanced Airbags & Driver's Knee Airbag  
 Front and Rear Seat-Mounted Side Airbags  
 Full-Length Side Curtain Airbags  
 Electronic Stability Control & Hill-Start Assist Control

#### INTERIOR, COMFORT & CONVENIENCE

12.3" Touchscreen w/Wireless Android Auto & Apple CarPlay  
 Kia Connect w/Comp 3-Yr Ultimate.\* Where Available\*\*  
 SIRIUSXM® w/Free 3-Mo. Subscription\*  
 Rear View Camera with Dynamic Guidelines  
 4.2" Instrument Display  
 Smart Key / Push Button Start / Smart Trunk (Open)  
 Remote Start / Remote Climate (Key Fob)  
 USB Multimedia Port, Front & Rear USB Charge Ports  
 Dual-Zone Automatic Climate Control  
 Multi-Adjustable Manual Front Seats  
 60/40 Split-Folding Rear Seats w/ Center Armrest  
 Tilt & Telescopic Steering Column  
 Rear Occupant Alert

#### EXTERIOR

16" Gloss Black Alloy Wheels  
 LED Reflector Headlights w/Auto-On/Off & Amber LED DRLs  
 LED Rear Combination Lights  
 Power Adjustable Heated Outside Mirrors  
 Compact Spare Tire

#### WARRANTY

10 Year/100,000 Mile Limited Powertrain Warranty  
 5 Year/60,000 Mile Limited Basic Warranty  
 5 Year/60,000 Mile Roadside Assistance

\*Additional terms and conditions apply.

\*\*Kia Connect may be currently unavailable for some Model Year 2022 and newer vehicles sold or purchased in Massachusetts; please see owners.kia.com for more information.

NOTE: When you purchase this vehicle, Kia America, Inc. collects personal information you provide to the dealership. For information on our collection and use of personal information and your rights, please see our Privacy Policy on www.kia.com.

### MANUFACTURER'S SUGGESTED RETAIL PRICE ▶

\$ 28,490.00

#### COMPARE GT-LINE FWD FEATURES

Added to/in place of standard LXS FWD features  
 - 18" Gloss Black Finished Alloy Wheels  
 - LED Fog Lights  
 - Black O/S Mirrors w/ LED Turn Signals  
 - GT-Line Exterior Styling  
 - 12.3" Touchscreen Display w/Navigation  
 - SynTex Seating Material  
 - Leather-Wrapped Sport Steering Wheel  
 - Power Driver's Seat  
 - Heated Front Seats  
 - Wireless Phone Charger  
 - Highway Driving Assist

#### ADDITIONAL INSTALLED EQUIPMENT:

(In addition to or in place of standard features)  
 Wolf Gray Paint \$495.00  
 GT-Line Red Interior Color Package \$295.00  
 GT-Line Premium Package \$2,200.00  
 - Panoramic Sunroof w/ Power Sunshade  
 - LED Interior Lighting  
 - Bose Premium Audio w/Active Sound Design  
 - 18" Black Finished Alloy Wheels, Unique Design  
 Carpeted Floor Mats \$200.00  
 First Aid Kit, Small \$45.00

MSRP INCLUDING OPTIONS

\$ 31,725.00

INLAND FREIGHT AND HANDLING

\$ 1,245.00

### TOTAL MANUFACTURER'S SUGGESTED RETAIL PRICE ▶

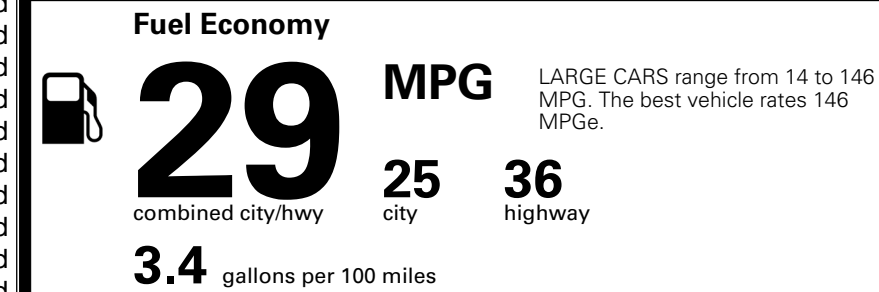
\$ 32,970.00

TOTAL ADDITIONAL WEIGHT: 8.1



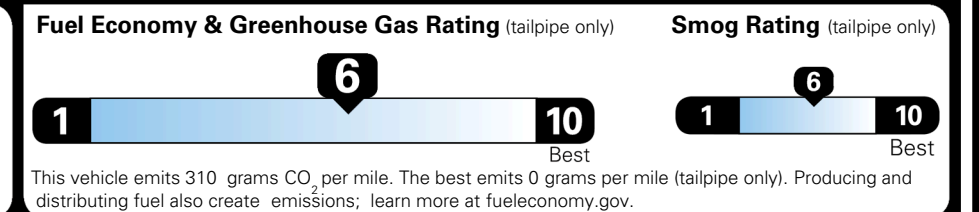
### EPA DOT Fuel Economy and Environment

Gasoline Vehicle



**You save \$0**  
 in fuel costs over 5 years compared to the average new vehicle.

**Annual fuel cost \$1,700**



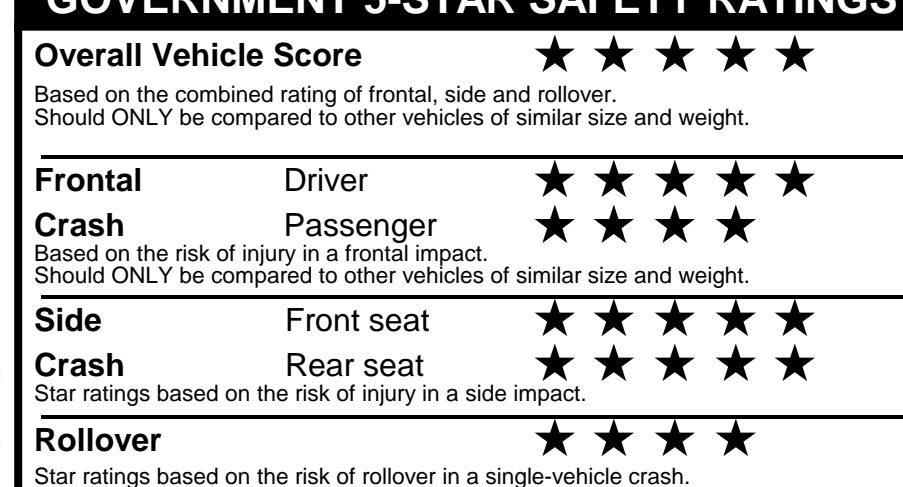
Actual results will vary for many reasons, including driving conditions and how you drive and maintain your vehicle. The average new vehicle gets 29 MPG and costs \$8,500 to fuel over 5 years. Cost estimates are based on 15,000 miles per year at \$ 3.30 per gallon. MPGe is miles per gasoline gallon equivalent. Vehicle emissions are a significant cause of climate change and smog.

**fueleconomy.gov**

Calculate personalized estimates and compare vehicles



### GOVERNMENT 5-STAR SAFETY RATINGS



Star ratings range from 1 to 5 stars (★★★★★) with 5 being the highest.  
 Source: National Highway Traffic Safety Administration (NHTSA).  
[www.safercar.gov](http://www.safercar.gov) or 1-888-327-4236

Manufacturer's suggested retail price includes Manufacturer's recommended pre-delivery service. License and title fees, state and local taxes and other dealer installed options and accessories are not included in the manufacturer's suggested retail price.

### PARTS CONTENT INFORMATION

**FOR VEHICLES IN THIS CAR LINE U.S./CANADIAN PARTS CONTENT: 0 %**

**MAJOR SOURCES OF FOREIGN PARTS: KOREA: 90%**

NOTE: PARTS CONTENT DOES NOT INCLUDE FINAL ASSEMBLY, DISTRIBUTION, OR OTHER NON-PARTS COSTS.

**FOR THIS VEHICLE FINAL ASSEMBLY POINT: HWASUNG, KOREA**

**COUNTRY OF ORIGIN ENGINE (MOTOR): KOREA**  
**TRANSMISSION: KOREA**